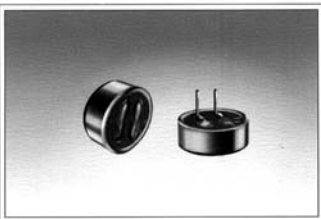


# CONDENSER MICROPHONES

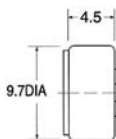
(9.7 × 4.5)

UNIT:mm

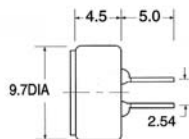


## Dimensions

### Lead Wire Type



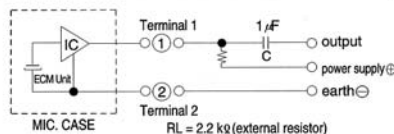
### PCB Type



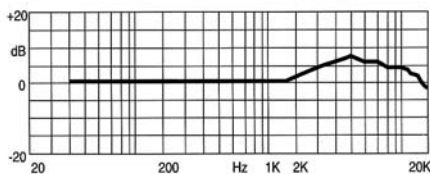
## Specifications

Sensitivity	:See Model No. Table
Impedance	:2.2 kΩ Max
Standard Power Supply	:4.5 V DC
Current Consumption	:0.8 mA Max
Sensitivity Reduction	:Within-3dB at 3V
S/N Ratio	:more than 60dB
Directivity	:Omnidirectional

## Schematic



## Frequency Response

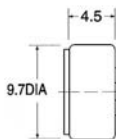


(9.7 × 4.5)

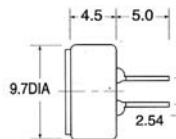


## Dimensions

### Lead Wire Type



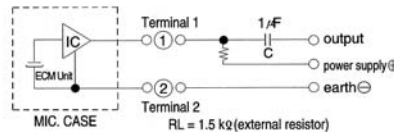
### PCB Type



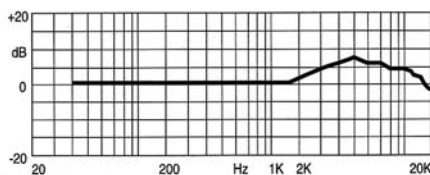
## Specifications

Sensitivity	:See Model No. Table
Impedance	:1.5 kΩ Max
Standard Power Supply	:1.5 V DC
Current Consumption	:0.3 mA Max
Sensitivity Reduction	:Within-3dB at 1V
S/N Ratio	:more than 60dB
Directivity	:Omnidirectional

## Schematic



## Frequency Response



Sensitivity (0dB=1V/pa at 1kHz)	Model No. Table	
	Lead Wire type	PCB Type
-46 ±2dB	ELMT45H46	ELMP45H46
-44 ±2dB	ELMT45H44	ELMP45H44
-42 ±2dB	ELMT45H42	ELMP45H42
-40 ±2dB	ELMT45H40	ELMP45H40
-38 ±2dB	ELMT45H38	ELMP45H38