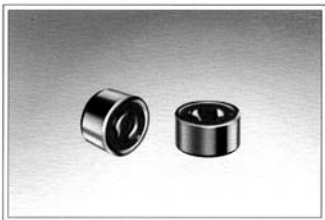


CONDENSER MICROPHONES

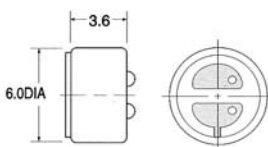
(6.0 × 3.6)

UNIT:mm



Dimensions

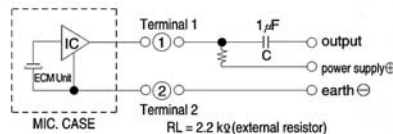
Lead Wire Type



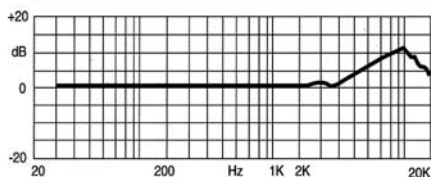
Specifications

Sensitivity	:See Model No. Table
Impedance	:2.2 kΩ Max
Standard Power Supply	:2V DC
Current Consumption	:0.5 mA Max
Sensitivity Reduction	:Within-3dB at 1.5V
S/N Ratio	:more than 58dB
Directivity	:Omnidirectional

Schematic



Frequency Response

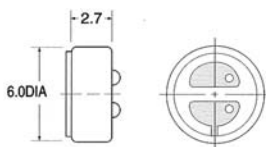


(6.0 × 2.7)

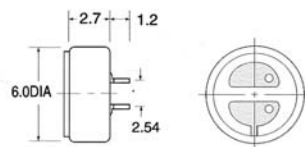


Dimensions

Lead Wire Type



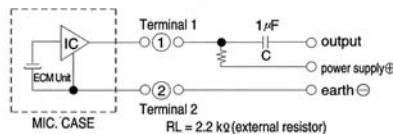
PCB Type



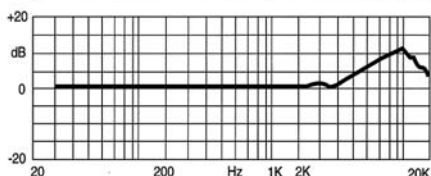
Specifications

Sensitivity	:See Model No. Table
Impedance	:2.2 kΩ Max
Standard Power Supply	:2 V DC
Current Consumption	:0.5 mA Max
Sensitivity Reduction	:Within-3dB at 1.5V
S/N Ratio	:more than 58dB
Directivity	:Omnidirectional

Schematic



Frequency Response



Sensitivity (0dB=1V/pa at 1kHz)	Model No. Table	
	Lead Wire type	PCB Type
-50 ±3dB	ELMS2750	ELMS27P50
-48 ±3dB	ELMS2748	ELMS27P48
-46 ±3dB	ELMS2746	ELMS27P46
-44 ±3dB	ELMS2744	ELMS27P44
-42 ±3dB	ELMS2742	ELMS27P42
-40 ±3dB	ELMS2740	ELMS27P40
-38 ±3dB	ELMS2738	ELMS27P38