

# MAGNETIC BUZZER

## HAMMER TYPE

Material of Case: ABS

Colour: Black

Operating Temperature:  $-20^{\circ}\text{C}$   $+60^{\circ}\text{C}$

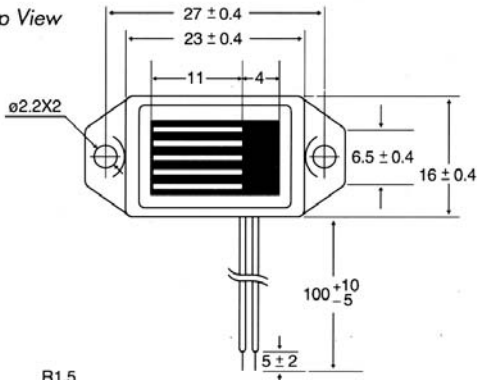
\*Wire Connection: Please refer to page 25



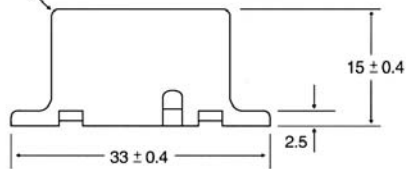
### DIMENSIONS (in mm)

Leadwire Type

Top View

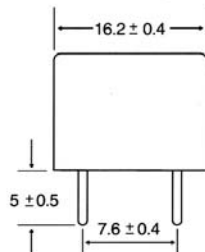
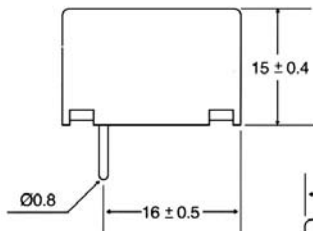
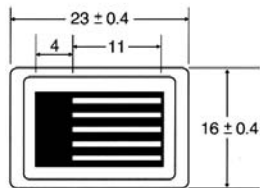


R1.5



Side View

Pin Type



### Electrical Specifications

Model No.	ELB20S1030	ELB20S1060	ELB20S1090	ELB20S1120	ELB20S1240
Operating Voltage (VDC)	2-4	3-7	6-11	7-17	16-30
Rated Voltage (VDC)	3	6	9	12	24
Max. Current at Rated Voltage (mA)	15	20	15	15	15
Frequency (Hz)	300-500	300-500	300-500	300-500	300-500
Min. Sound Pressure at Rated Voltage (dBA/20cm)	75	75	75	75	75
Tone	SINGLE	SINGLE	SINGLE	SINGLE	SINGLE
Pulse Rate at Rated Voltage (Pulse/Sec)	NIL	NIL	NIL	NIL	NIL
Terminal	LEAD/PIN	LEAD/PIN	LEAD/PIN	LEAD/PIN	LEAD/PIN