

PIEZO TRANSDUCERS

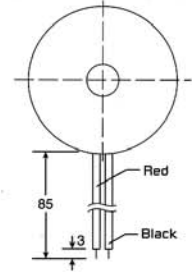
EXTERNAL DRIVE TYPE

DIMENSIONS

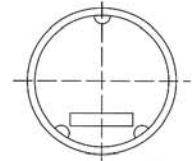
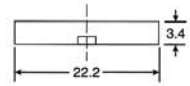


color Black
ABS Housing Material
Leadwire Terminal

Top View



Side View



all dimensions are in mm

ELECTRICAL SPECIFICATIONS

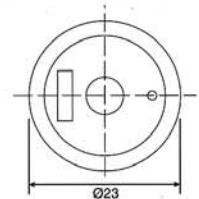
Model No.	ELI77PR23100
Sound Pressure Level	105 ± 3.5 dB (1 kHz, 1 V rms, IEC - 318 coupler)
Impedance	1200 max. Ω
Capacitance	45 nF ± 30% at 1.0KHz
Operating Temperature	-20 ~ +70°C
Weight	1.3 g

DIMENSIONS

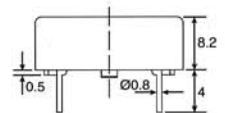


color Black
ABS Housing Material
Pin Terminal

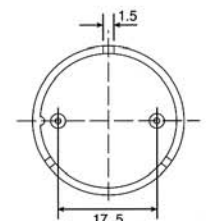
Top View



Side View



Bottom View



all dimensions are in mm

ELECTRICAL SPECIFICATIONS

Model No.	ELI98PZ23300
Sound Pressure Level	70 dBA min. (6V rms sine wave, 30cm, 3000Hz)
Current	2.5 mA max. at 3000Hz
Capacitance	12000 pF ± 30% at 120Hz
Max. Input Voltage	100V p-p
Operating Temperature	-30 ~ +50°C
Weight	3 g