

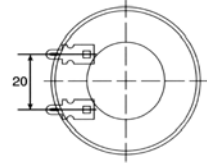
PIEZO TRANSDUCERS

EXTERNAL DRIVE TYPE

DIMENSIONS



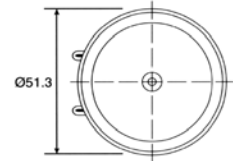
Top View



Side View



Bottom View



all dimensions are in mm

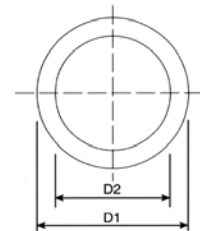
color Black
ABS Housing Material
Plate Terminal

ELECTRICAL SPECIFICATIONS

Model No.	ELT100PZ512200
Sound Pressure Level	95 dBA min. (2.83V rms sine wave, 50cm, 21 - 23KHz)
Current	100 mA. max.
Capacitance	60 nF ± 20%
Max. Input Voltage	10V rms
Operating Temperature	-30 - +77°C
Weight	10 g

DIMENSIONS

Top View



Side View



all dimensions are in mm

ELECTRICAL SPECIFICATIONS

Model No.	Dimensions (mm)				Characteristics		
	D1 ± 0.1	D2 ± 0.2	T ± 0.03	H ± 0.05	f KHz	R	C ± 30%pF
ELT64PE121650	12	9	0.25	0.45	16.5 ± 1.0	< 800	6.000
ELT64PE151000	15	11	0.25	0.45	10 ± 1.0	< 400	9.000
ELT64PE200700	20	15	0.25	0.5	7.0 ± 0.7	< 250	15.000
ELT64PE270300	27	20	0.15	0.38	3.0 ± 0.5	< 300	35.000
ELT64PE310290	31	20	0.25	0.5	2.9 ± 0.5	< 300	25.000
ELT64PE350260	35	25	0.25	0.5	2.6 ± 0.5	< 250	40.000
ELT64PE410150	41	25	0.25	0.5	1.5 ± 0.5	< 400	40.000
ELT64PE500130	50	30	0.25	0.5	1.3 ± 0.5	< 300	60.000