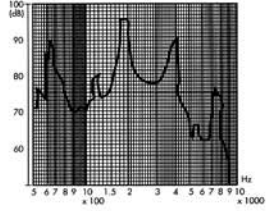


# MAGNETIC TRANSDUCERS

## EXTERNAL DRIVE TYPE

### FREQUENCY RESPONSE

[ actual curve of type DB06 ]



applied voltage : 5 V, 1/2 duty, square wave  
distance for measurement : 10cm



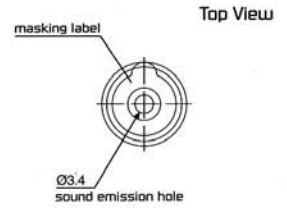
color Black  
Noryl SEI-GFN2 Housing Material  
Pin Terminal

### ELECTRICAL SPECIFICATIONS

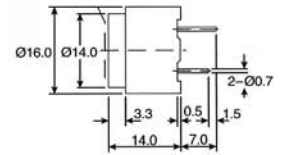
Model No.	ELTDB01	ELTDB06	ELTDB12
Operating Voltage (V)	1 - 2	4 - 8	6 - 18
Rated Voltage (V)	1.5	6	12
Max. Rated Current (mA)	12	40	40
Coil Resistance ( $\Omega$ )	27 $\pm$ 3	50 $\pm$ 5	115 $\pm$ 12
Coil Impedance ( $\Omega$ )	80	110	200
Min Sound Output (dB/10cm)	80	85	85
Resonant Frequency (Hz)	2048	2048	2048
Operating Temperature ( $^{\circ}$ C)	-25 ~ +70	-25 ~ +70	-25 ~ +70
Weight (gm.)	7	7	7

Value applying rated voltage (2048Hz, 1/2 duty, square wave)  
\* Value applying (2048Hz, sine wave, measuring current 60 $\mu$ A)

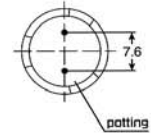
### DIMENSIONS



### Side View



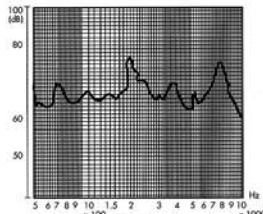
### Bottom View



all dimensions are in mm

### FREQUENCY RESPONSE

[ actual curve of type DB105 ]



applied voltage : 1.5 V, 1/2 duty, square wave  
distance for measurement : 10cm



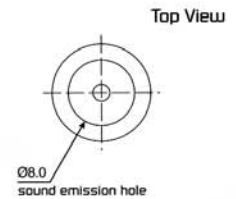
color Black  
Noryl SEI Housing Material  
Pin Terminal

### ELECTRICAL SPECIFICATIONS

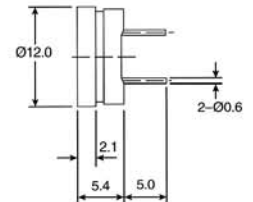
Model No.	ELTDB105G	ELTDB105
Operating Voltage (V)	1 - 2	1 - 2
Rated Voltage (V)	1.5	1.5
Max. Rated Current (mA)	30	10
Coil Resistance ( $\Omega$ )	16 $\pm$ 2	50 $\pm$ 7.5
*Coil Impedance ( $\Omega$ )	40	140
Min Sound Output (dB/10cm)	75	70
Resonant Frequency (Hz)	2048	2048
Operating Temperature ( $^{\circ}$ C)	-20 ~ +60	-20 ~ +60
Weight (gm.)	2	2

Value applying rated voltage (2048Hz, 1/2 duty, square wave)  
\* Value applying (2048Hz, sine wave, measuring current 60 $\mu$ A)

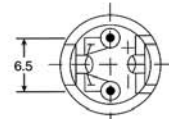
### DIMENSIONS



### Side View



### Bottom View



all dimensions are in mm