

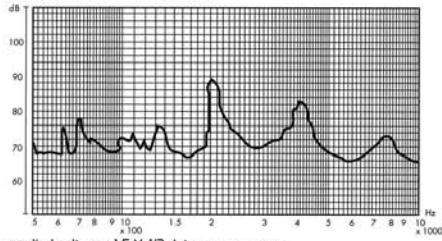
MAGNETIC TRANSDUCERS

EXTERNAL DRIVE TYPE

DIMENSIONS

FREQUENCY RESPONSE

[actual curve of type DB 111]



applied voltage : 1.5 V, 1/2 duty, square wave
distance for measurement : 10cm

ELECTRICAL SPECIFICATIONS

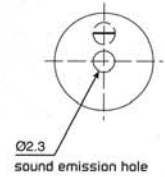
Model No.	ELTDB111G	ELTDB111	ELTDB111A
Operating Voltage (V)	1 - 2	1 - 2	1 - 2
Rated Voltage (V)	1.5	1.5	1.5
Max. Rated Current (mA)	30	10	10
Coil Resistance (Ω)	16 \pm 4.5	42 \pm 5	50 \pm 7.5
*Coil Impedance (Ω)	40	80	140
Min Sound Output (dBA/10cm)	85	80	80
Resonant Frequency (Hz)	2048	2048	2048
Operating Temperature ($^{\circ}$ C)	-20 ~ +60	-20 ~ +60	-20 ~ +60
Weight (gm.)	2	2	2

Value applying rated voltage (2048Hz, 1/2 duty, square wave)
* Value applying (2048Hz, sine wave, measuring current 60 μ A)

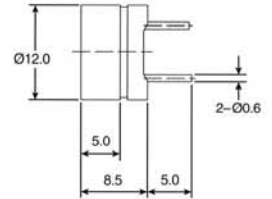


color Black
ABS or Noryl SEI Housing Material
Pin or Leadwire Terminal

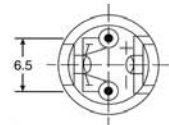
Top View



Side View



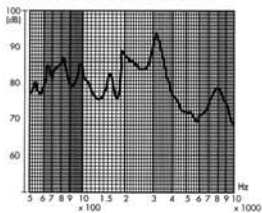
Bottom View



all dimensions are in mm

FREQUENCY RESPONSE

[actual curve of type DB 113]



applied voltage : 1.5 V, 1/2 duty, square wave
distance for measurement : 10cm

ELECTRICAL SPECIFICATIONS

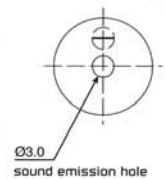
Model No.	ELTDB113
Operating Voltage (V)	1 - 2
Rated Voltage (V)	1.5
Max. Rated Current (mA)	30
Coil Resistance (Ω)	16 \pm 4.5
*Coil Impedance (Ω)	40
Min Sound Output (dBA/10cm)	80
Resonant Frequency (Hz)	2048
Operating Temperature ($^{\circ}$ C)	-20 ~ +60
Weight (gm.)	2

Value applying rated voltage (2048Hz, 1/2 duty, square wave)
* Value applying (2048Hz, sine wave, measuring current 60 μ A)

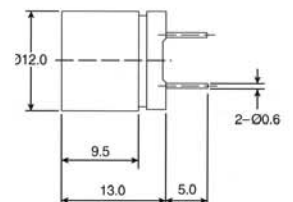


color Black
ABS or Noryl SEI Housing Material
Pin Terminal

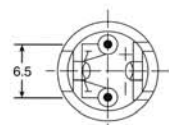
Top View



Side View



Bottom View



all dimensions are in mm