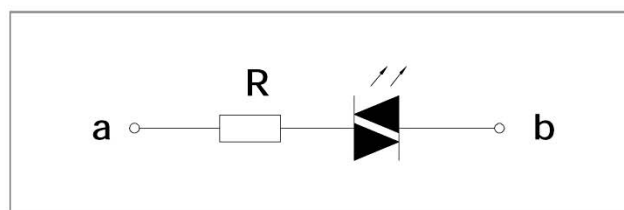


Lamp Ratings

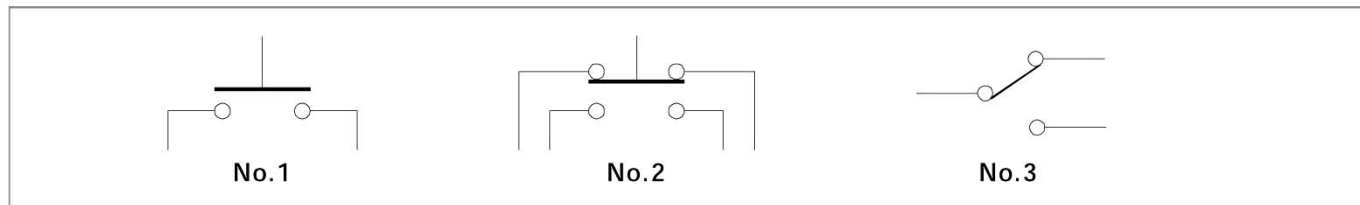
Lamp Type	LED Lamp		
Rated Voltage	AC/DC6V	AC/DC12V	AC/DC24V
	AC/DC110V		AC/DC220V
Cover Color	R	G	Y O B W
Life	About 40,000 hours		

Note: The lamp contains a current-limiting resistor.
Other operating voltage can be customized.

Lamp circuit diagram



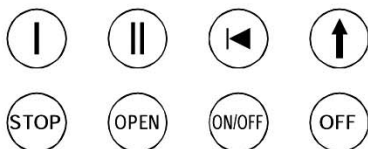
Switching Operation



Engraving Options

Special type can be made to order.

Examples



Visual Effect



Nikel Plated Brass
Satin surface



Stainless Steel
Spiral surface



Gold-plated brass
Satin surface

Soldering Information

Handiwork soldering: Soldering iron 30W or under 30W at 230°C for 3sec max.

Purchasing Notice

- Please write code after check the Implication of Type and the detailed specification in the catalogue.
- Please place an order over 1,000pcs if the products need to be made to order.
- All IP Degree listed in our forms can seal front of panel only.