

Power Entry Module Filters

LA-Series

- IEC-Connector
- Fuse block 5 x 20 or 6,3 x 32 mm
- Two pole line switch (illuminated on request)
- Voltage selector 110 / 120 V or 230 / 240 V
- Further types on request
- Illuminated line switch F-7332A



for Series FLA, XLA and ZLA

according IEC 950



Type	Max. current UL/VDE	Max. voltage	Inductance L_1	Capacity		Line switch	Terminals	Application
				C_x	C_y			
5EFLA2S	5A/4A	250 VAC	2x0,93 mH	0,009 μ F	2x3nF	>50000 operations at full load 35A switch on current	Fastons 2,79 mm	Normal attenuation
3EXLA2S	3A/2A	250 VAC	2x2,3 mH	0,27+0,1 μ F	2x4nF			High attenuation
3EZLA2S	3A/2A	250 VAC	2x13,77 mH	0,47x0,27 μ F	2x4nF			Very high attenuation

Max. leakage current line to ground 0.5 mA at 250 VAC/50 Hz

All models are available with a cover to prevent electrical as well as with a common line plug.

Filters for Switching Power Supplies, illuminated

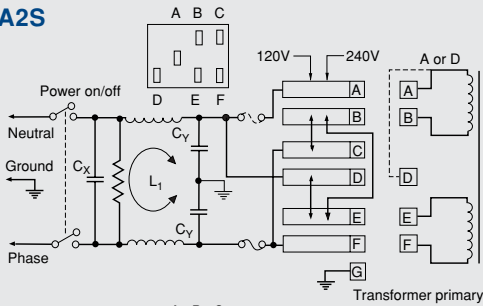
Type	Max. current UL/VDE	Max. voltage	Inductance L_1	Capacity		Line switch	Terminals	Application
				C_x	C_y			
F7332A	3A/2A	250 VAC	2x13,77 mH	0,47x0,27 μ F	2x4nF	s.a.	s.a.	Very high attenuation

Max. leakage current line to ground 0.5 mA at 250 VAC/50 Hz

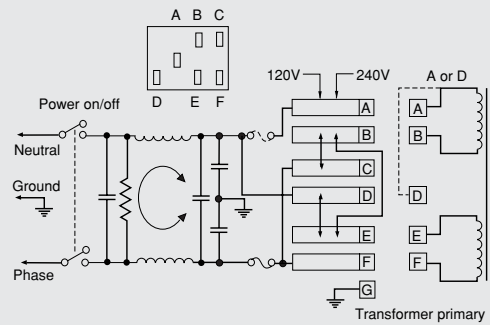
All models are available with a cover to prevent electrical as well as with a common line plug.

Electrical Schematic

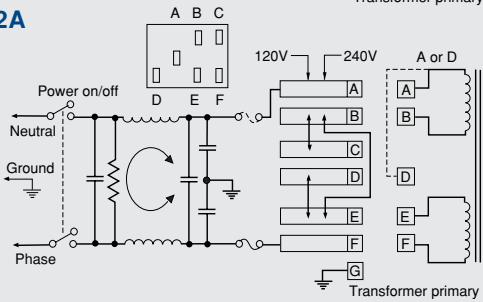
5EFLA2S



3EXLA2S & 3EZLA2S



F7332A



Typ. Insertion Loss

asym. — sym. —

