

IEC Connector Filters with double Pole Switch C-Series

- Three function PEM combining IEC socket DPST switch and filter
- Available up to 10A
- Compact size
- Also available w/o filter



according IEC 950



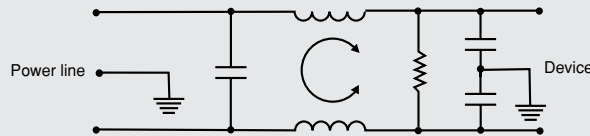
Type	Max. current UL/VDE	Inductance	Capacity		Switch	Terminals
			Cx	Cy		
10CS1 / 10CE1	10A	-	-	-	x	4,8mm x 0,8mm flat connectors
1CFS1 / 1CFE1	1A	2 x 10mH	0,1µF	2 x 3nF	x	6,35mm x 0,8mm flat connectors
3CFS1 / 3CFE1	3A	2 x 2,43mH	0,1µF	2 x 3nF	x	6,35mm x 0,8mm flat connectors
6CFS1 / 6CFE1	6A	2 x 0,82mH	0,1µF	2 x 3nF	x	6,35mm x 0,8mm flat connectors
10CFS1 / 10CFE1	10A	2 x 0,31mH	0,1µF	2 x 3nF	x	6,35mm x 0,8mm flat connectors

For medical Applications

Type	Max. current UL/VDE	Inductance	Capacity		Switch	Terminals
			Cx	Cy		
1CHS1 / 1CHE1	1A	2 x 10mH	0,1µF	-	x	6,35mm x 0,8mm flat connectors
3CHS1 / 3CHE1	3A	2 x 2,43mH	0,1µF	-	x	6,35mm x 0,8mm flat connectors
6CHS1 / 6CHE1	6A	2 x 0,82mH	0,1µF	-	x	6,35mm x 0,8mm flat connectors
10CHS1 / 10CHE1	10A	2 x 0,31mH	0,1µF	-	x	6,35mm x 0,8mm flat connectors

Electrical Schematic

F models



Typ. Insertion Loss

asym. — sym. —

