

IEC Connector Filters with Fuses

EGG-Series

- IEC-connector including 1 or 2 5 x 20 fuses
- Universal filter with high attenuation
- C-Version suppresses RF noise between equipment ground and protective ground



according IEC 950



Type	Max. current UL/VDE	Induct.	Type	Max. current UL/VDE	Induct.	Type	Max. current UL/VDE	Inductance	Capacity		Fuses	Ground line induct.	Terminals
									Cx	Cy			
1EGG1-1	1A	2x10mH	3EGG1-1	3A	2x2mH	6EGG1-1	6A/5A	2x0,93mH	0,1µF	2x3nF	1		Faston
1EGS1-1	1A	2x10mH	3EGS1-1	3A	2x2mH	6EGS1-1	6A/5A	2x0,93mH	0,1µF	2x3nF	1		Faston
1EGG1C-1	1A	2x10mH	3EGG1C-1	3A	2x2mH	6EGG1C-1	6A/5A	2x0,93mH	0,1µF	2x3nF	1	x	Faston
1EGG1-2	1A	2x10mH	3EGG1-2	3A	2x2mH	6EGG1-2	6A/5A	2x0,93mH	0,1µF	2x3nF	2		Faston
1EGS1-2	1A	2x10mH	3EGS1-2	3A	2x2mH	6EGS1-2	6A/5A	2x0,93mH	0,1µF	2x3nF	2		Faston
1EGG1C-2	1A	2x10mH	3EGG1C-2	3A	2x2mH	6EGG1C-2	6A/5A	2x0,93mH	0,1µF	2x3nF	2	x	Faston
1EGG8-1	1A	2x10mH	3EGG8-1	3A	2x2mH	6EGG8-1	6A/5A	2x0,93mH	0,1µF	2x3nF	1		Wire
1EGG8C-1	1A	2x10mH	3EGG8C-1	3A	2x2mH	6EGG8C-1	6A/5A	2x0,93mH	0,1µF	2x3nF	1	x	Wire
1EGG8-2	1A	2x10mH	3EGG8-2	3A	2x2mH	6EGG8-2	6A/5A	2x0,93mH	0,1µF	2x3nF	2		Wire
1EGG8C-2	1A	2x10mH	3EGG8C-2	3A	2x2mH	6EGG8C-2	6A/5A	2x0,93mH	0,1µF	2x3nF	2	x	Wire

Max. leakage current line to ground 0,5 mA at 250 VAC/50 Hz

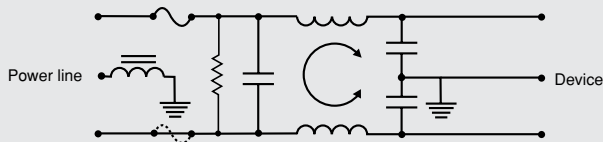
For medical Applications

Type	Max. current UL/VDE	Induct.	Type	Max. current UL/VDE	Induct.	Type	Max. current UL/VDE	Inductance	Capacity		Fuses	Ground line induct.	Terminals
									Cx	Cy			
1EHG1-2	1A	2x10mH	3EHG1-2	3A	2x2mH	6EHG1-2	6A/5A	2x0,93mH	0,1µF		2	-	Faston

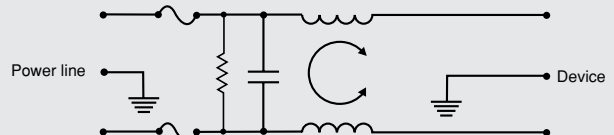
Max. leakage current line to ground 5 µA at 250 VAC/50 Hz

Electrical Schematic

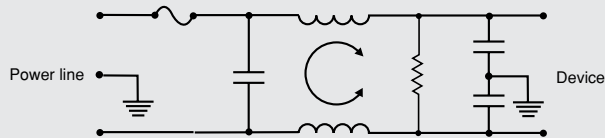
EGG with ground line inductance (C-version)



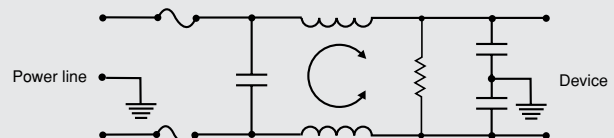
EHG



EGG-1 / EGS-1



EGG-2 / EGS-2



Typ. Insertion Loss

asym. — sym. —

