

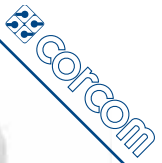
IEC Connector Filters

EEA-/EEB-Series

- Best price/performance ratio
- Compatible with many standard filters



according IEC 950



Type	Max.current UL/VDE	Inductance	Capacity		Terminals	Type	Max.current UL/VDE	Inductance	Capacity		Terminals
			C _v	C _x					C _v	C _x	
1EEA1	1A	2x 10mH	3nF	0,009µF	Faston	1EEB1	1A	2x 10mH	3nF	0,047µF	Faston
1EEAP	1A	2x 10mH	3nF	0,009µF	PCB	1EEBP	1A	2x 10mH	3nF	0,047µF	PCB
1EEA2	1A	2x 10mH	3nF	0,009µF	90° Faston	1EEB2	1A	2x 10mH	3nF	0,047µF	90° Faston
1EAS1	1A	2x 10mH	3nF	0,009µF	Faston	1EBS1	1A	2x 10mH	3nF	0,047µF	Faston/snap-in
3EEA1	3A	2x 1,5mH	3nF	0,009µF	Faston	3EEB1	3A	2x 1,5mH	3nF	0,047µF	Faston
3EEAP	3A	2x 1,5mH	3nF	0,009µF	PCB	3EEBP	3A	2x 1,5mH	3nF	0,047µF	PCB
3EEA2	3A	2x 1,5mH	3nF	0,009µF	90° Faston	3EEB2	3A	2x 1,5mH	3nF	0,047µF	90° Faston
3EAS1	3A	2x 1,5mH	3nF	0,009µF	Faston	3EBS1	3A	2x 1,5mH	3nF	0,047µF	Faston/snap-in
6EEA1	6A	2x 0,47mH	3nF	0,009µF	Faston	6EEB1	6A	2x 0,47mH	3nF	0,047µF	Faston
6EEAP	6A	2x 0,47mH	3nF	0,009µF	PCB	6EEBP	6A	2x 0,47mH	3nF	0,047µF	PCB
6EEA2	6A	2x 0,47mH	3nF	0,009µF	90° Faston	6EEB2	6A	2x 0,47mH	3nF	0,047µF	90° Faston
6EAS1	6A	2x 0,47mH	3nF	0,009µF	Faston	6EBS1	6A	2x 0,47mH	3nF	0,047µF	Faston/snap-in
10EEA1	10A	2x 0,36mH	3nF	0,009µF	Faston	10EEB1	10A	2x 0,36mH	3nF	0,047µF	Faston
10EEAP	10A	2x 0,36mH	3nF	0,009µF	PCB	10EEBP	10A	2x 0,36mH	3nF	0,047µF	PCB
10EEA2	10A	2x 0,36mH	3nF	0,009µF	90° Faston	10EEB2	10A	2x 0,36mH	3nF	0,047µF	90° Faston
10EAS1	10A	2x 0,36mH	3nF	0,009µF	Faston	10EBS1	10A	2x 0,36mH	3nF	0,047µF	Faston/snap-in

Max. leakage current line to ground 0.5 mA at 250 VAC/50 Hz

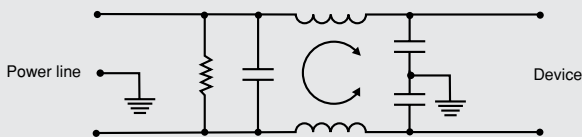
For medical Applications

Type	Max.current UL/VDE	Inductance	Capacity C _x	Type	Max.current UL/VDE	Inductance	Capacity C _x
1EAH1	1A	2x 10mH	0,009µF	1EBH1	1A	2x 10mH	0,047µF
3EAH1	3A	2x 1,5mH	0,009µF	3EBH1	3A	2x 1,5mH	0,047µF
6EAH1	6A	2x 0,47mH	0,009µF	6EBH1	6A	2x 0,47mH	0,047µF
10EAH1	10A	2x 0,36mH	0,009µF	10EBH1	10A	2x 0,36mH	0,047µF

Max. leakage current line to ground 5 µA at 250 VAC/50 Hz

Electrical Schematic

EEA / EEB / EAS / EBS



EAH / EBH

