

IEC Connector Filters

EF-Series

- FC-version with ground line inductor

 for EF1F and EF2F Series

according IEC 950

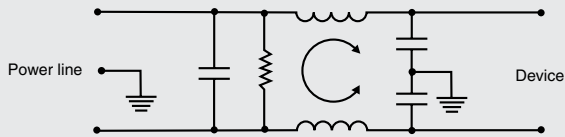


Type	Max.current ULVDE	Inductance	Capacity		Mounting terminals	Type	Max.Current ULVDE	Inductance	Capacity		Mounting terminals
			C _x	C _y					C _x	C _y	
1EF1	1A	2x1,8mH	0,009µF	2x2,8nF	Solder lugs	1EF2	1A	2x1,8mH	0,009µF	2x2,8nF	Solder lugs
1EF4	1A	2x1,8mH	0,009µF	2x2,8nF	Wire	1EF8	1A	2x1,8mH	0,009µF	2x2,8nF	Wire
3EF1	3A	2x0,99mH	0,009µF	2x2,8nF	Solder lugs	3EF2	3A	2x0,99mH	0,009µF	2x2,8nF	Solder lugs
3EF4	3A	2x0,99mH	0,009µF	2x2,8nF	Wire	3EF8	3A	2x0,99mH	0,009µF	2x2,8nF	Wire
6EF1	6A	2x0,46mH	0,009µF	2x2,8nF	Solder lugs	6EF2	6A	2x0,46mH	0,009µF	2x2,8nF	Solder lugs
6EF4	6A	2x0,46mH	0,009µF	2x2,8nF	Wire	6EF8	6A	2x0,46mH	0,009µF	2x2,8nF	Wire
1EF1F	1A	2x1,8mH	0,009µF	2x2,8nF	Faston	1EF2F	1A	2x1,8mH	0,009µF	2x2,8nF	Faston
3EF1F	3A	2x0,99mH	0,009µF	2x2,8nF	Faston	3EF2F	3A	2x0,99mH	0,009µF	2x2,8nF	Faston
6EF1F	6A	2x0,46mH	0,009µF	2x2,8nF	Faston	6EF2F	6A	2x0,46mH	0,009µF	2x2,8nF	Faston
10EF1F	10A	2x0,36mH	0,009µF	2x2,8nF	Faston	10EF1FC	10A	2x0,36mH	0,009µF	2x2,8nF	Faston

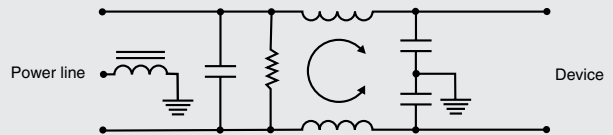
Max. leakage current line to ground 0.5 mA at 250 VAC/50 Hz

Electrical Schematic

EF1 / EF2 / EF1F / EF2F



EF1FC



Typ. Insertion Loss in dB

asym. — sym. —

