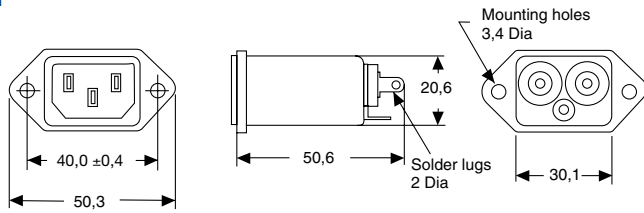
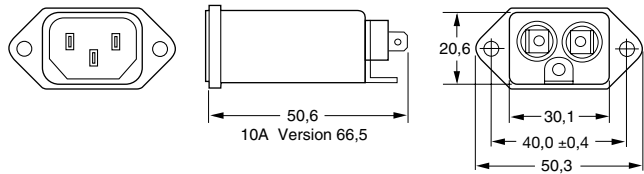


Case Styles and typ. Sizes

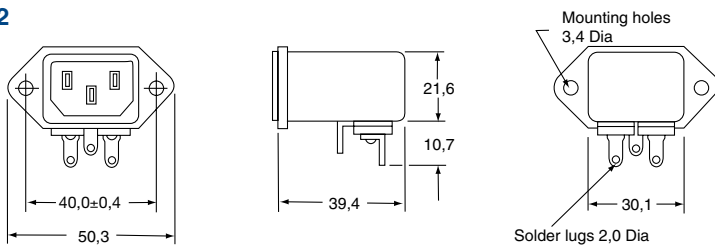
EF1



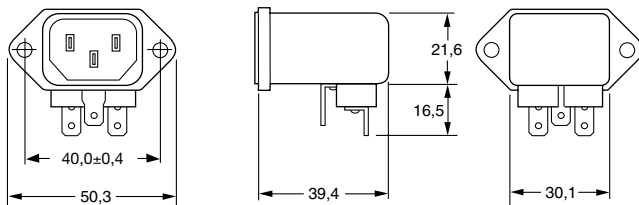
EF1F



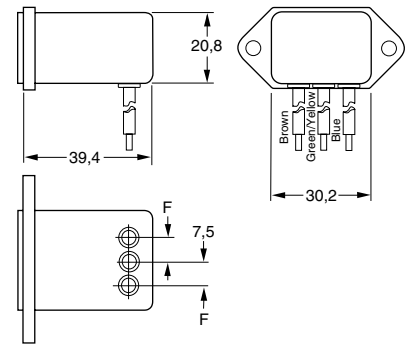
EF2



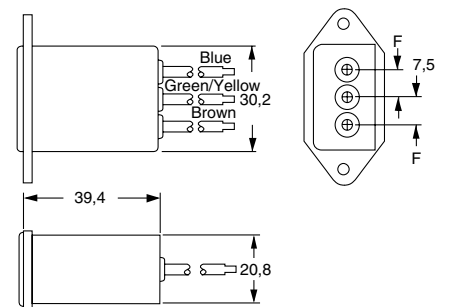
EF2F



EF4



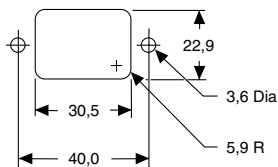
EF8



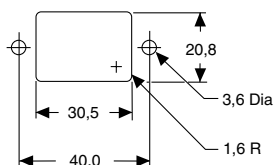
Typical wire length 100 mm

Panel cutout

for back mounting



for front mounting



Faston 6,35
Hole 1,8 Dia
Mounting holes 3,4 Dia
Tolerance ± 0,1

Accessories for EF-Series

Shroud

for all versions
EF1 / EF1F
Material UL-94

Part No.
41-3151-AO

