

IEC Connector Filters

ED-Series

- 6ED1C/10ED1C with ground line inductor
- F-3550 high performance filter for switching power supplies



according IEC 950

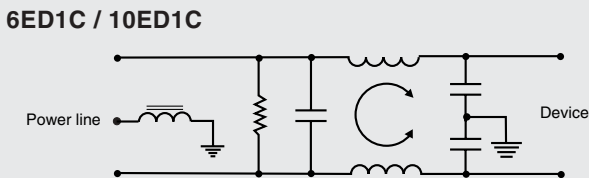
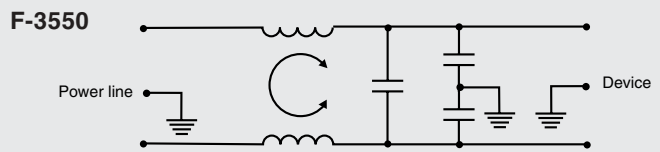
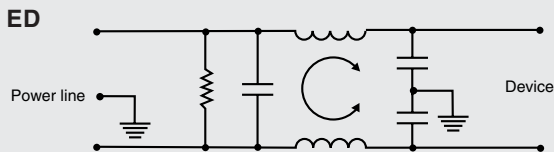


F-3550 only approved

Type	Max.current UL/VDE	Inductance	Capacity C _x C _y		Ground line inductor	Type	Max.current UL/VDE	Inductance	Capacity C _x C _y		Ground line inductor
1ED1	1A	2x3,7mH	0,1µF	2x3nF	No	1ED2	1A	2x3,7mH	0,1µF	2x3nF	No
1ED4	1A	2x3,7mH	0,1µF	2x3nF	No	1ED8	1A	2x3,7mH	0,1µF	2x3nF	No
3ED1	3A	2x2,0mH	0,1µF	2x3nF	No	3ED2	3A	2x2,0mH	0,1µF	2x3nF	No
3ED4	3A	2x2,0mH	0,1µF	2x3nF	No	3ED8	3A	2x2,0mH	0,1µF	2x3nF	No
6ED1	6A	2x0,93mH	0,1µF	2x3nF	No	6ED1C	6A	2x0,93mH	0,1µF	2x3nF	Yes
6ED2	6A	2x0,93mH	0,1µF	2x3nF	No	6ED4	6A	2x0,93mH	0,1µF	2x3nF	No
6ED4C	6A	2x0,93mH	0,1µF	2x3nH	Yes	6ED8	6A	2x0,93mH	0,1µF	2x3nF	No
6ED8C	6A	2x0,93mH	0,1µF	2x3nH	Yes	10ED1C	10A	2x0,36mH	0,1µF	2x3nF	Yes
10ED1	10A	2x0,36mH	0,1µF	2x3nF	No	F-3550	3A	2x7mH	0,1µF	2x4nF	No

Max. leakage current line to ground 0.5 mA at 250 VAC/50 Hz

Electrical Schematic



Typ. Insertion Loss

asym. — sym. —

