

# IEC Connectors Filters

## EC-Series

Like ED-Series, additionally equipped with a second X-capacitor for increased symmetrical attenuation



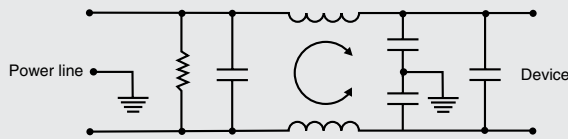
according IEC 950



Type	Max.current UL/VDE	Inductance	Capacity		Type	Max.current UL/VDE	Inductance	Capacity	
			C <sub>x</sub>	C <sub>y</sub>				C <sub>x</sub>	C <sub>y</sub>
1EC1	1A	2x3,7mH	2x0,1µF	2x3nF	1EC2	1A	2x3,7mH	2x0,1µF	2x3nF
1EC4	1A	2x3,7mH	2x0,1µF	2x3nF	1EC8	1A	2x3,7mH	2x0,1µF	2x3nF
3EC1	3A	2x2,0mH	2x0,1µF	2x3nF	3EC2	3A	2x2,0mH	2x0,1µF	2x3nF
3EC4	3A	2x2,0mH	2x0,1µF	2x3nF	3EC8	3A	2x2,0mH	2x0,1µF	2x3nF
6EC1	6A	2x0,93mH	2x0,1µF	2x3nF	6EC2	6A	2x0,93mH	2x0,1µF	2x3nF
6EC4	6A	2x0,93mH	2x0,1µF	2x3nF	6EC8	6A	2x0,93mH	2x0,1µF	2x3nF
10EC1	10A	2x0,36mH	2x0,1µF	2x3nF					

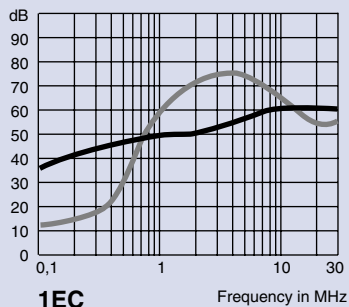
Max. leakage current line to ground 0.5 mA at 250 VAC/50 Hz

### Electrical Schematic

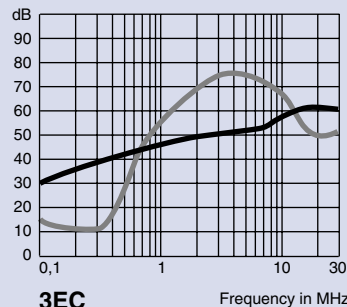


### Typ. Insertion Loss

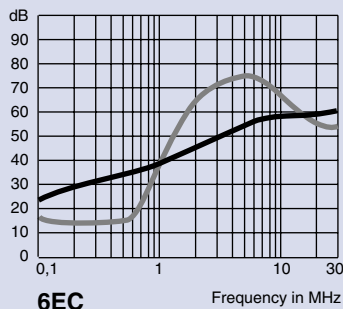
asym. — sym. —



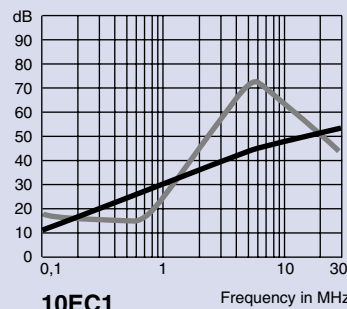
1EC



3EC



6EC



10EC1