

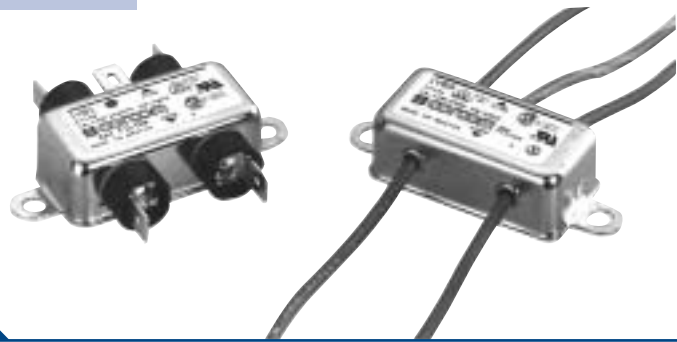
Universal Chassis-mount Filters

B-Series

Designed to clean-up noise in a wide range of electrical and electronic devices (VB, EB)

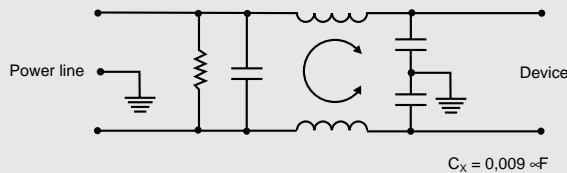


according IEC 950



Type	Max. leakage current	Capacity C_V	Type	Max. leakage current	Capacity C_V	Max. current UL/VDE	Inductance	Dimensions (mm)					
								A	B	C	D	E	
1EB1	Line to ground	2x2,8nF	1VB1	Line to ground	2x5,5nF	1A	2x1,8mH	57,1	46,1	16,7	54,0	64,2	
1EB3		2x2,8nF	1VB3		2x5,5nF	1A	2x1,8mH	24,3	46,1	16,7	54,0	64,2	
2EB1		2x2,8nF	2VB1		2x5,5nF	2A	2x0,54mH	57,1	46,1	16,7	54,0	64,2	
2EB3		2x2,8nF	2VB3		2x5,5nF	2A	2x0,54mH	24,3	46,1	16,7	54,0	64,2	
3EB1		2x2,8nF	3VB1		2x5,5nF	3A	2x1,7mH	66,1	46,1	19,9	54,0	64,2	
3EB3		2x2,8nF	3VB3		2x5,5nF	3A	2x1,7mH	33,2	46,1	19,9	54,0	64,2	
5EB1	250VAC 50Hz	2x2,8nF	5VB1	250VAC 50Hz	2x5,5nF	5A	2x0,51mH	66,1	46,1	19,9	54,0	64,2	
5EB3		2x2,8nF	5VB3		2x5,5nF	5A	2x0,51mH	33,2	46,1	19,9	54,0	64,2	
10EB1		2x2,8nF	10VB1		2x5,5nF	10A/8A	2x0,49mH	66,1	46,1	29,4	54,0	64,2	
10EB3		3x2,8nF	10VB3		2x5,5nF	10A/8A	2x0,49mH	33,4	46,1	29,4	54,0	64,2	
20EB1		0,40mA	2x2,8nF		10VB6	2x5,5nF	10A/8A	2x0,49mH	69,1	46,1	29,4	54,0	64,2
					20VB1	2x5,5nF	20A/16A	2x0,44mH	85,2	52,4	29,4	60,3	71,3
	20VB6			2x5,5nF	20A/16A	2x0,44mH	87,9	52,4	29,4	60,3	71,3		
			30VB6	2x5,5nF	30A/25A	2x0,69mH	135,6	85,7	38,9	95,3	106,7		

Electrical Schematic



Typ. Insertion Loss

asym. — sym. —

