

Chassis/Back Panel Mount Filters with/without IEC Connector

K-Series

- Comparable to B-Series, with increased symmetrical attenuation

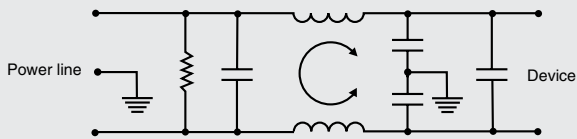


according IEC 950

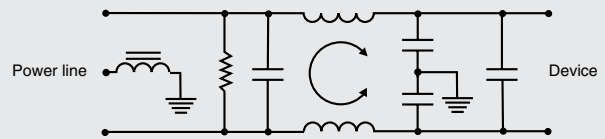


Type	Max.leak-age current	Capacity C _V	Type	Max.leak-age current	Capacity C _V	Max.current UL/VDE	Inductance.	Tapped insert	Dimensions (mm)						
									A	B	C	D	E		
1EK1	Line to ground 250VAC 50Hz	2x2,8nF	1VK1	Line to ground 250VAC 50Hz	2x5,5nF	1A	2x1,8mH		78,7	52,4	23,1	60,3	71,3		
1EK3		2x2,8nF	1VK3		2x5,5nF	1A	2x1,8mH		45,9	52,4	23,1	60,3	71,3		
2EK1		2x2,8nF	2VK1		2x5,5nF	2A	2x0,54mH		78,7	52,4	23,1	60,3	71,3		
2EK3		2x2,8nF	2VK3		2x5,5nF	2A	2x0,54mH		45,9	52,4	23,1	60,3	71,3		
3EK1		2x2,8nF	3VK1		2x5,5nF	3A	2x1,7mH		78,7	52,4	29,4	60,3	71,3		
3EK3		2x2,8nF	3VK3		2x5,5nF	3A	2x1,7mH		45,9	52,4	29,4	60,3	71,3		
3EK7		2x2,8nF	3VK7		2x5,5nF	3A	2x1,7mH		6-32x1/4	81,4	57,1	32,4	40,0	16,0	
3EK7M		2x2,8nF	3VK7M		2x5,5nF	3A	2x1,7mH		M 3x0,5	81,4	57,1	32,4	40,0	16,0	
5EK1		2x2,8nF	5VK1		2x5x5nF	5A	2x0,51mH			78,7	52,4	29,4	60,3	71,3	
5EK3		2x2,8nF	5VK3		2x5,5nF	5A	2x0,51mH			45,9	52,4	29,4	60,3	71,3	
5EK7		2x2,8nF	5VK7		2x5,5nF	5A	2x0,51mH		6-32x1/4	81,4	57,1	32,4	40,0	16,0	
5EK7M		2x2,8nF	5VK7M		2x5,5nF	5A	2x0,51mH		M 3x0,5	81,4	57,1	32,4	40,0	16,0	
10EK1		0,40mA	2x2,8nF		10VK1	1,0mA	2x5,5nF	10A/8A	2x0,49mH		85,1	52,4	29,4	60,3	71,3
10EK3			2x2,8nF		10VK3		2x5,5nF	10A/8A	2x0,49mH		52,4	52,4	29,4	60,3	71,3
				10VK6	2x5,5nF		10A/8A	2x0,49mH		87,9	52,4	29,4	60,3	16,0	
10EK7	2x2,8nF		10VK7	2x5,5nF	10A/8A		2x0,49mH		6-32x1/4	94,1	57,1	44,4	40,0	16,0	
10EK7M	2x2,8nF		10VK7M	2x5,5nF	10A/8A		2x0,49mH		M 3x0,5	94,1	57,1	44,4	40,0	16,0	
20EK1	2x2,8nF		20VK1	2x5,5nF	20A/16A		2x0,44mH			87,9	65,0	38,8	74,6	85,1	
			20VK6	2x5,5nF	20A/16A		2x0,44mH			87,9	65,0	38,8	74,6	85,1	
			20VK7	2x5,5nF	20A/16A		2x0,44mH		6-32x1/4	96,5	57,9	50,8	40,4	21,5	
			30VK6	2x5,5nF	30A/25A		2x0,69mH			135,6	85,7	38,9	95,3	106,7	
			30VK6C	2x5,5nF	30A/25A		2x0,69mH			135,6	85,7	38,9	95,3	106,7	

Electrical Schematic



30VK6C (with choke)



$C_x = 2 \times 0,1 \mu\text{F}$ except 30VK6: $C_x = 2 \times 0,27 \mu\text{F} + 0,47 \mu\text{F}$

Typ. Insertion Loss

asym. — sym. —

