

# Chassis/Back Panel Mount Filters with IEC Connector

DK-Series

- Extended K-Series

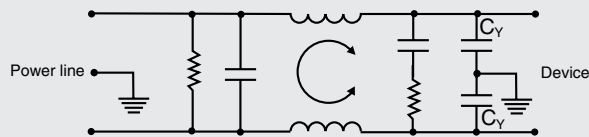


according IEC 950



Type	Max.leak-age current	Capac. C <sub>Y</sub>	Type	Max.leak-age current	Capacity		Max. current UL/VDE	Inductance	Dimensions (mm)				
					C <sub>X</sub>	C <sub>Y</sub>			A	B	C	D	E
1EDK1	Line to ground	3nF	1VDK1	Line to ground	0,54x0,27µF	4,7nF	1A/1A	2x 1,86mH	85,1	52,6	29,5	60,3	71,4
1EDK3		3nF	1VDK3		0,54x0,27µF	4,7nF	1A/1A	2x 1,86mH	52,6	52,6	29,5	60,3	71,4
3EDK1		3nF	3VDK1		2x0,54µF	5,5nF	3A/3A	2x 1,76mH	97,8	52,6	29,5	74,6	85,1
3EDK3	250VAC 50Hz	3nF	3VDK3	250VAC 50Hz	2x0,54µF	5,5nF	3A/3A	2x 1,76mH	65,0	52,6	29,5	74,6	85,1
6EDK1		3nF	6VDK1		2x0,54µF	5,5nF	6A/6A	2x 0,516mH	97,8	52,6	33,5	74,6	85,1
6EDK3		3nF	6VDK3		2x0,54µF	5,5nF	6A/6A	2x 0,516mH	65,0	52,6	29,5	74,6	85,1
10EDK1	0,50mA	3nF	10VDK1	0,90mA	2x0,54µF	5,5nF	10A/8A	2x 0,495mH	97,8	52,6	33,5	74,6	85,1
10EDK3		3nF	10VDK3		2x0,54µF	5,5nF	10A/8A	2x 0,495mH	65,3	52,6	33,5	74,6	85,1
20EDK1		3nF	20VDK1		2x0,54µF	5,5nF	20A/16A	2x 0,540mH	97,8	52,6	45,2	74,6	85,1
			20VDK6		2x0,54µF	5,5nF	20A/16A	2x 0,540mH	87,9	52,6	45,2	74,6	85,1

## Electrical Schematic



## Typ. Insertion Loss

asym. — sym. —

