

Chassis-mount Filter

VS- VV-, VW-Series

These series of similarly constructed filters are available in various electronic designs, optimized for the respective impedance requirements (switching power supplies, thyristor circuits, motor drives etc.). Also for DC/DC applications.



according IEC 950



Type	Max.current UL/VDE	Inductance		Capacity C_x	Comm.mode impedance	Normal mode impedance	Device impedance at high frequencies	Dimensions (mm)				
		L_1	L_2					A	B	C	D	E
3VS1	3A/2,5A	2x1mH	2x0,03mH	2x0,27 μ F	N=2 (‘L’)	N=3 (‘Pi’)	High	85,3	46,1	29,4	60,3	70,5
6VS1	6A/5A	2x1,8mH	2x0,07mH	2x0,27 μ F				98,0	52,8	38,9	74,6	84,8
10VS1	10A/8A	2x1,2mH	2x0,04mH	2x0,27 μ F				98,0	52,8	38,9	74,6	84,8
20VS1	20A/16A	2x0,93mH	2x0,03mH	2x0,27 μ F				132,8	85,7	38,9	95,3	106,7
20VS6	20A/16A	2x0,93mH	2x0,03mH	2x0,27 μ F				135,6	85,7	38,9	95,5	106,6
3VV1	3A/2,5A	2x1mH	2x0,03mH	3x0,27 μ F				N=3 (‘T’)	N=3 (‘Pi’)	Low	85,3	46,1
6VV1	6A/5A	2x1,8mH	2x0,07mH	3x0,27 μ F	98,0	52,8	38,9				74,6	84,8
10VV1	10A/8A	2x1,2mH	2x0,04mH	3x0,27 μ F	98,0	52,8	38,9				74,6	84,8
20VV1	20A/16A	2x1,73mH	2x0,03mH	3x0,27 μ F	132,8	85,7	38,9				95,3	106,7
20VV6	20A/16A	2x1,73mH	2x0,03mH	3x0,27 μ F	135,6	85,7	38,9				95,5	106,6
3VW1	3A/2,5A	2x1mH	2x0,03mH	3x0,27 μ F	N=4 (‘Dbl.L’)	N=3 (‘Pi’)	High				85,3	46,1
6VW1	6A/5A	2x1,8mH	2x0,07mH	3x0,27 μ F				98,0	52,8	38,9	74,6	84,8
10VW1	10A/8A	2x1,2mH	2x0,04mH	3x0,27 μ F				98,0	52,8	38,9	74,6	84,8
20VW1	20A/16A	2x1,73mH	2x0,03mH	3x0,27 μ F				132,8	85,7	38,9	95,3	106,7
20VW6	20A/16A	2x1,73mH	2x0,03mH	3x0,27 μ F				135,6	85,7	38,9	95,5	106,6

Max. leakage current line to ground 1.0 mA at 250 VAC/50 Hz, VS, VV; 1.5 mA VW

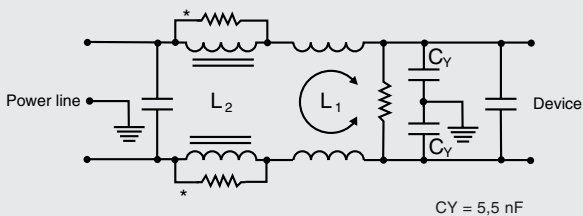
For medical Applications

Type	Max.current UL/VDE	Inductance		Capacity C_x	Comm.mode impedance	Normal mode impedance	Device impedance at high frequencies	Dimensions (mm)				
		L_1	L_2					A	B	C	D	E
3MV1	3A/2,5A	2x1mH	2x0,04mH	3x0,27 μ F	N=3 (‘T’)	N=3 (‘Pi’)	Low	85,3	46,1	32,6	60,3	70,5
6MV1	6A/5A	2x1,8mH	2x0,07mH	3x0,27 μ F				98,0	52,8	38,9	74,6	84,8
10MV1	10A/8A	2x1,2mH	2x0,05mH	3x0,27 μ F				98,0	52,8	38,9	74,6	84,8
20MV1	20A/16A	2x1,73mH	2x0,03mH	2x0,47 μ F				132,8	85,7	38,9	95,3	106,7

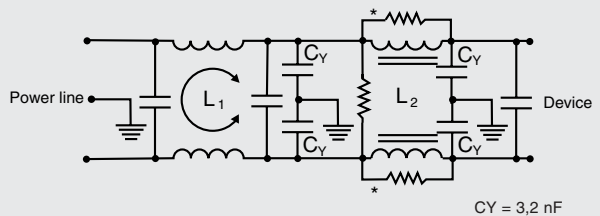
Max. leakage current line to ground 250 VAC/50 Hz 0,15 mA

Electrical Schematic

VS-Series

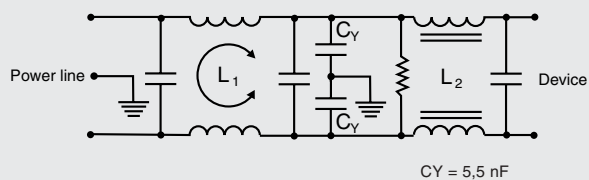


VW-Series



* R only by 20A-device

VV-Series



MV-Series

