

Chassis/Back Panel Mount Filters with/without IEC Connector

SK-Series

- Single stage filter with very high symmetrical and asymmetrical attenuation
- Extended frequency range (effective above 10 kHz)

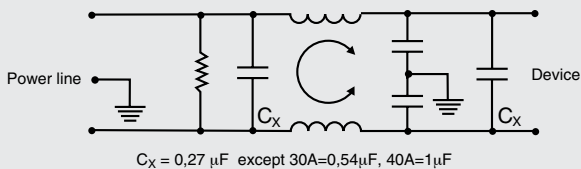


according IEC 950

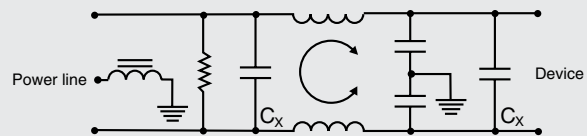


Type	Max.leak-age current	Induc.	Capacity C _v	Typ	Max.leak-age current	Induc.	Capacity C _v	Max.Current UL/VDE	Terminal	Dimensions (mm)				
										A	B	C	D	E
3ESK1	Line to ground	2x7mH	2x2,8nF	3VSK1	Line to ground	2x7mH	2x5,5nF	3A	Faston	97,7	52,4	29,4	74,6	85,1
3ESK3		2x7mH	2x2,8nF	3VSK3		2x7mH	2x5,5nF	3A	Wire	65,0	52,4	29,4	74,6	85,1
3ESK7		2x7mH	2x2,8nF	3VSK7		2x7mH	2x5,5nF	3A	IEC-connector	81,5	57,1	38,8	40,0	16,0
3ESK7M	250VAC 50Hz	2x7mH	2x2,8nF	3VSK7M	250VAC 50Hz	2x7mH	2x5,5nF	3A	IEC-connector	81,5	57,1	38,8	40,0	16,0
6ESK1		2x8,7mH	2x2,8nF	6VSK1		2x8,7mH	2x5,5nF	6A/5A	Faston	110,1	57,1	32,4	87,1	97,1
6ESK3		2x8,7mH	2x2,8nF	6VSK3		2x8,7mH	2x5,5nF	6A/5A	Wire	77,4	57,1	32,4	87,1	97,1
6ESK7		2x8,7mH	2x2,8nF	6VSK7		2x8,7mH	2x5,5nF	6A/5A	IEC-connector	81,5	57,1	45,1	40,0	16,0
6ESK7M		2x8,7mH	2x2,8nF	6VSK7M		2x8,7mH	2x5,5nF	6A/5A	IEC-connector	81,5	57,1	45,1	40,0	16,0
10ESK1		2x7mH	2x2,8nF	10VSK1		2x7mH	2x5,5nF	10A/8A	Faston	126,2	57,1	45,1	103,2	113,3
10ESK3		2x7mH	2x2,8nF	10VSK3		2x7mH	2x5,5nF	10A/8A	Wire	93,6	57,1	45,1	103,2	113,3
10ESK7	2x7mH	2x2,8nF	10VSK7	2x7mH	2x5,5nF	10A/8A	IEC-connector	109,9	57,1	45,1	40,0	16,0		
10ESK7M	2x7mH	2x2,8nF	10VSK7M	2x7mH	2x5,5nF	10A/8A	IEC-connector	109,9	57,1	45,1	40,0	16,07		
20ESK6	Line/ground 250VAC	2x6,1 mH	2x4nF	20VSK6	Line/ground 250VAC	2x6,1mH	2x10nF	20 A / 16 A	Mounting stud	127,3	57,1	45,1	103,2	113,3
30ESK6		2x1,7mH	2x4nF	30VSK6		2x1,7mH	2x10nF	30 A / 25 A	Mounting stud	125,0	79,3	69,9	87,3	101,6
30ESK6C		2x1,7mH	2x4nF	30VSK6C		2x1,7mH	2x10nF	30 A / 25 A	Mounting stud	125,0	79,3	69,9	87,3	101,6
40VSK6	1,25mA			40VSK6	1,25mA	2x2,3mH	2x10nF	40 A / 36 A	Mounting stud	152,4	79,3	55,4	88,9	100,6

Electrical Schematic



Only 30ESK6C / 30VSK6C



Typ. Insertion Loss

asym. — sym. —

