

Chassis-mount Filters

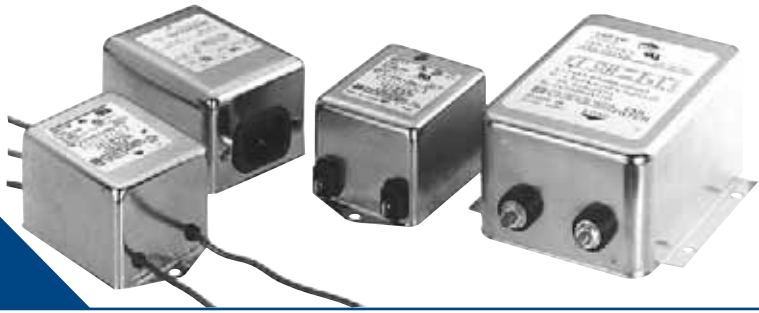
T-Series

Applications, special features:

- Optimized filter with regard to attenuation and size
- Very high symmetrical and asymmetrical attenuation
- Low leakage currents
- Especially suited for RFI suppression above 10 kHz
- Suitable for motor drive applications
- HT types for medical applications



according IEC 950



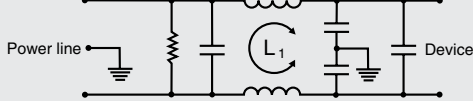
Type	Max.current UL/VDE	Max. leak- age current	Capacity C_V	Inductance		Capacity C_X	
				L_1	L_2		
3ET1	3A/2,75A	Line to ground	2x4nF	2x36,8mH		2x0,47 μ F	
3ET3	3A/2,75A		2x4nF	2x36,8mH		2x0,47 μ F	
3ET7	3A/2,75A		2x4nF	2x36,8mH		2x0,47 μ F	
6ET1	6A/5A		2x4nF	2x18,5mH		2x0,47 μ F	
6ET3	6A/5A		2x4nF	2x18,5mH		2x0,47 μ F	
6ET7	6A/5A		2x4nF	2x18,5mH		2x0,47 μ F	
10ET1	10A/8A		250VAC/ 50Hz	2x4nF	2x9,5mH	0,074mH	1,77 μ F
10ET3	10A/8A	2x4nF		2x9,5mH	0,074mH	1,77 μ F	
15ET1	15A/12A	0,5mA		2x4nF	2x5,04mH	2x0,03mH	2,07 μ F
15ET6	15A/12A			2x4nF	2x5,04mH	2x0,03mH	2,07 μ F
10VT1	10A/8A			1,25mA	2x10nF	2x9,5mH	0,074mH
10VT3	10A/8A	2x10nF			2x9,5mH	0,074mH	1,77 μ F
15VT1	15A/12A	2,1mA	2x15nF		2x5,04mH	2x0,03mH	2,07 μ F
15VT6	15A/12A		2x15nF	2x5,04mH	2x0,03mH	2,07 μ F	
20ET1/6	20A/20A		0,5mA	2x4nF	2x3,88mH	2x0,03mH	2,07 μ F
20VT1/6	20A/20A	2x15nF		2x3,88mH	2x0,03mH	2,07 μ F	

For medical Applications

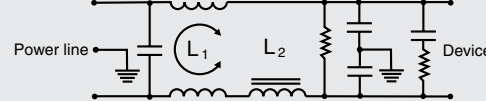
Type	Max.current UL/VDE	Max. leak- age current	Inductance		Capacity C_X	
			L_1	L_2		
3EHT1	3A/2,75A	Line to ground	2x36,8mH		2x0,47 μ F	
3EHT3	3A/2,75A		2x36,8mH		2x0,47 μ F	
3EHT7	3A/2,75A		2x36,8mH		2x0,47 μ F	
6EHT1	6A/5A		2x18,5mH		2x0,47 μ F	
6EHT3	6A/5A		2x18,5mH		2x0,47 μ F	
6EHT7	6A/5A		2x18,5mH		2x0,47 μ F	
10EHT1	10A/8A		250VAC/ 50Hz	2x9,5mH	0,074mH	1,77 μ F
10EHT3	10A/8A	2x9,5mH		0,074mH	1,77 μ F	
15EHT1	15A/12A	5 μ A		2x5,04mH	2x0,03mH	2,07 μ F
15EHT6	15A/12A			2x5,04mH	2x0,03mH	2,07 μ F
10EHT1	10A/8A			1,25mA	2x9,5mH	0,074mH
10EHT3	10A/8A	2x9,5mH			0,074mH	1,77 μ F
15EHT1	15A/12A	2,1mA	2x5,04mH		2x0,03mH	2,07 μ F
15EHT6	15A/12A		2x5,04mH	2x0,03mH	2,07 μ F	

Electrical Schematic

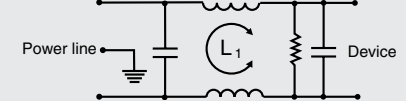
3ET & 6ET



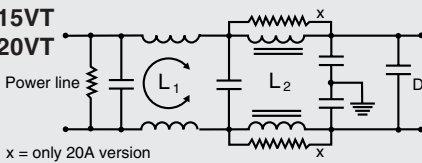
10ET & 10VT



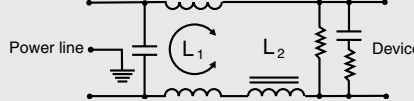
3EHT / 6EHT



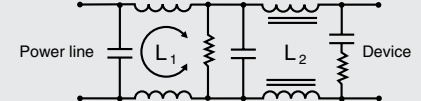
15ET & 15VT
20ET & 20VT



10EHT



15EHT



Typ. Insertion Loss

asym. — sym. —

