

3-Phase Filters

F-Series

3-phase RFI filter with high attenuation in wye/delta-applications

- Max. operating voltage 440V/480V/660V

- Low leakage current

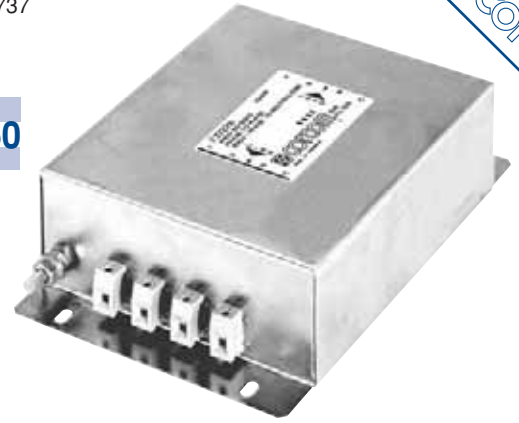


F-2810, F-3297, F-3737



F-3297

according IEC 950



Type	Operating voltage AC 50/60Hz	Max. current	Leakage current	Circuit No.	Inductance		Capacity		Case No.	Type of connection
					L ₁	L ₂	C _x	C _y		
F3719*	440V	8A	3,0mA	5	3x2,8mH	3x380μH	3x2,2μF + 3x2,3μF	3x15nF	2	Terminal screw/cable
F3727*	440V	10A	3,4mA	2	4x4,44mH	4x74μH	3x3,7μF + 3x3,2μF	25nF	3	Mounting stud
F3727A	440V	10A	3,4mA	2	4x4,44mH	4x74μH	3x3,7μF + 3x3,2μF	25nF	7	Terminal screw
F2810	440V	10A	3,5mA	6	4x0,94mH	4x0,94mH	4x0,1μF	4x18nF	3	Mounting stud
F3737	400V	15A	1,4mA	1	3x0,45mH	-	3x0,33μF + 3x0,47μF	15nF	1	Mounting stud
F3380C	480V	16A	4,0mA	3	3x4,44mH	3x360μH	3x2,2μF + 3x1,0μF	3x35nF	6	Terminal screw
F3738*	440V	20A	2,5mA	4	3x4,3mH	3x30μH	3x1,5μF + 3x0,74μF	3x15nF	5	Mounting stud
F3297	480V	30A	3,0mA	7	4x0,67mH	-	3x0,135μF + 3x0,135μF	4x10nF	4	Mounting stud
F3297A	660V	30A	3,0mA	7	4x0,67mH	-	3x0,75μF + 3x0,75μF	4x10nF	4	Mounting stud

*Suitable for frequency converter applications

Plastic encapsulated screw terminal (polyamide 6.6) for easy handling for wire sizes up to 4 mm (AWG 12)

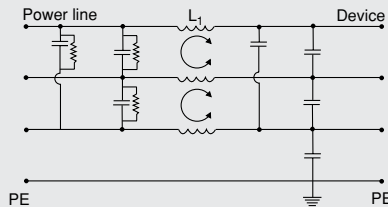
Leakage current line/ground at 250 V/50 Hz max. 3.4 mA/F3380-40 μA. Further versions with wire connections or combined with screw terminal on request.

F2810/F3727 – 8 mounting studs No. 8-32 for fixed installation, 10 mounting studs with nut and washer No. 10-32 for cable connection.

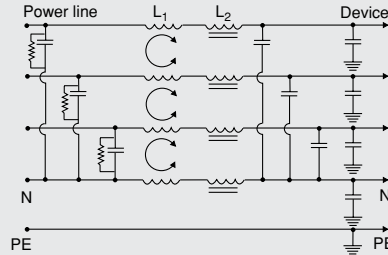
F3297A – 10 mounting studs with nut and washer. No. 10-32 for cable connection, 4 mounting straps for fixed installation (4x5.5 mm holes).

Electrical Schematic

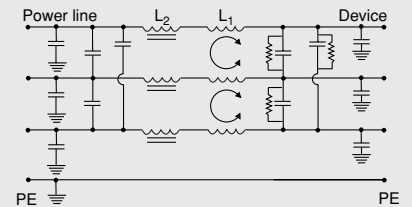
Circuit No. 1



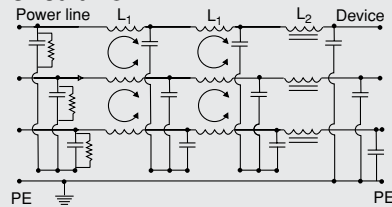
Circuit No. 2



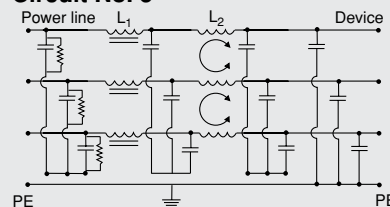
Circuit No. 3



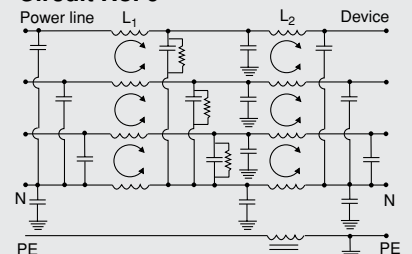
Circuit No. 4



Circuit No. 5



Circuit No. 6



Circuit No. 7

