

3-Phase Filters

FCD10BS-Series

- Optimized for very high insertion loss
- Suitable for infeed/regenerative-(ER)-modules

 (pending)



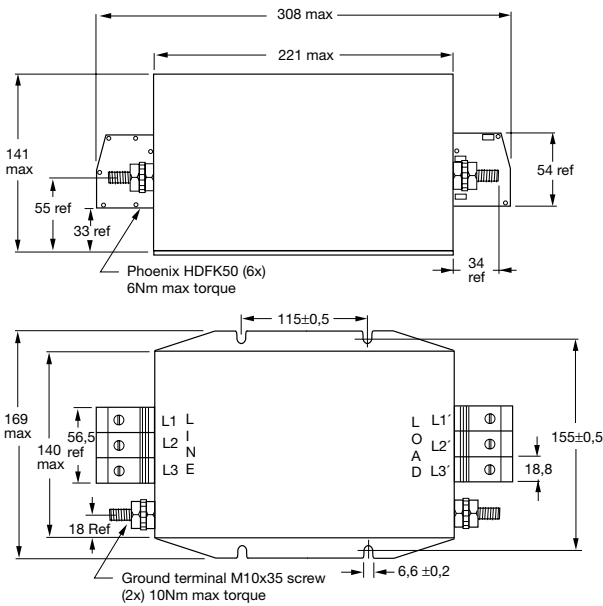
Type	Operating voltage AC 50/60Hz	max. current	Max. Leakage current voltage drop virtual N to PE/V	Inductance L	Capacity		Type of connection (both sides)
					C _x	C	
36FCD10BS	480V	3x36A	3,25mA/V	1,66mH	11∞F	8,6∞F	Terminal block 16mm ²
50FCD10BS	480V	3x50A	3,25mA/V	1,03mH	11∞F	8,6∞F	Terminal block 16mm ²
63FCD10BS	480V	3x63A	3,25mA/V	0,99mH	11∞F	8,6∞F	Terminal block 16mm ²
80FCD10BS	480V	3x80A	3,25mA/V	0,8mH	11∞F	8,6∞F	Terminal block 50mm ²
110FCD10BS	480V	3x110A	3,25mA/V	0,7mH	11∞F	8,6∞F	Terminal block 50mm ²
150FCD10BS	480V	3x150A	3,25mA/V	0,53mH	11∞F	8,6∞F	Terminal block 50mm ²
180FCD10BS	480V	3x180A	3,25mA/V	0,62mH	11∞F	8,6∞F	Terminal block 95mm ²
230FCD10BS	480V	3x230A	3,25mA/V	0,4mH	11∞F	8,6∞F	Terminal block 95mm ²

Earth-conductor-connection with threaded studs on each side

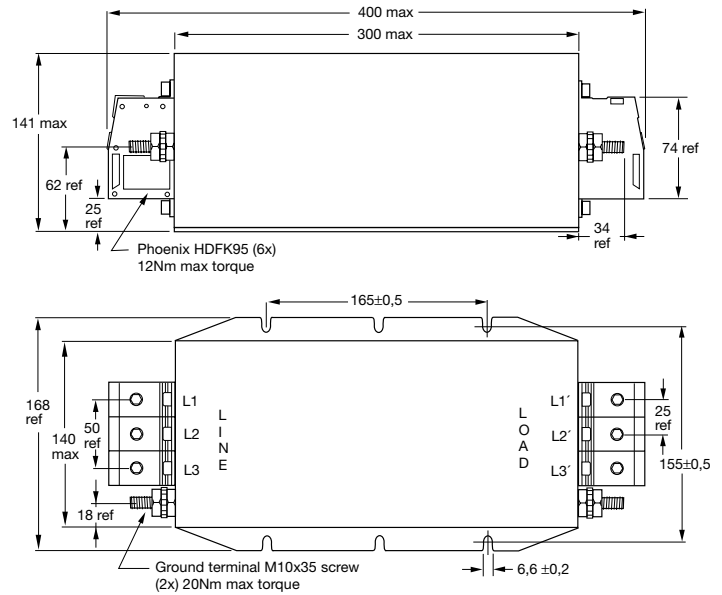
Caution: Increased leakage current - please observe mounting instructions

Case Styles and typ. Sizes

80FCD10BS / 110FCD10BS / 150FCD10BS

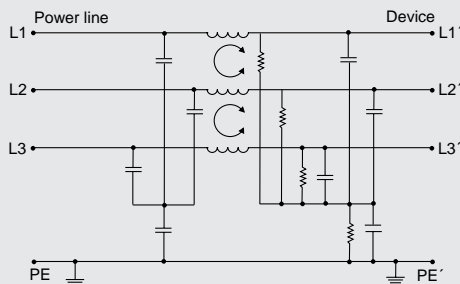


180FCD10BS / 230FCD10BS



Electrical Schematic

FCD10BS 36A to 230A



Typ. Insertion Loss

asym. — sym. —

