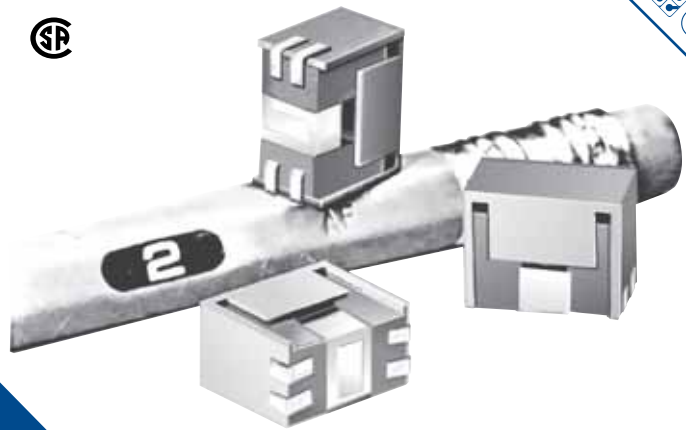


## Surface mountable RFI filters

*BLF-Series*



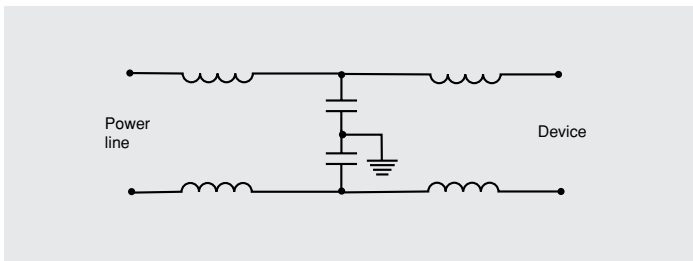
This line of surface mountable RFI filters is specifically designed to eliminate noise on the signal line. These board level filters attenuate noise on the signal line at the frequency range of 10MHz to 1000MHz with maximum attenuation at 40MHz to 400MHz.

The U shaped ferrite features a parallel first and second leg with a center leg surrounded by a grounding/shorting strap and a capacitor for each line. This unique design optimizes

Type	Max. current UL, VDE	Capacity	Inductance
BLF082	1A	82pF	2μH
BLF820	1A	820pF	2μH

the filter performance by combining the elements into one low profile single piece filter. Each filter acts on two signal lines, but can be stacked in an array to allow performance over multiple lines.

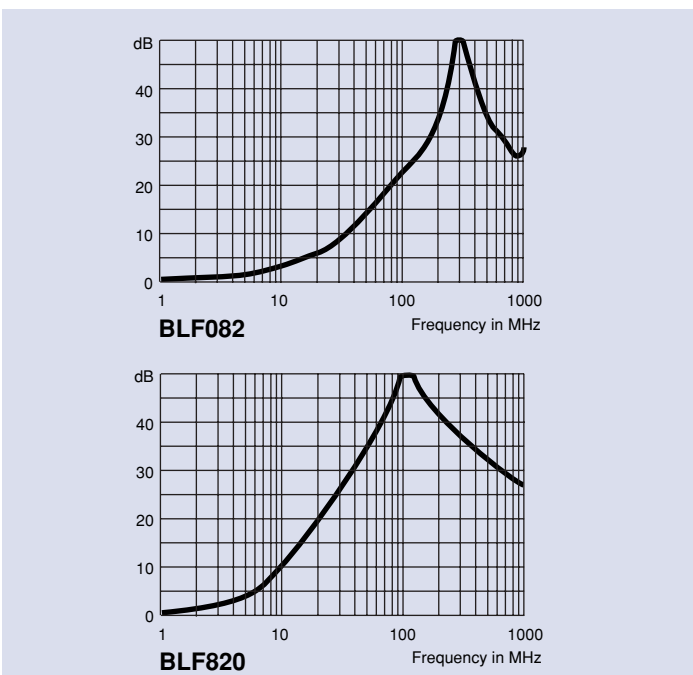
### Electrical Schematic



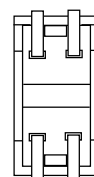
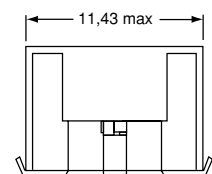
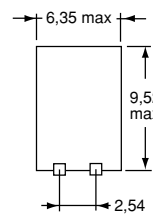
The BLF filter can withstand dielectric voltage of 1000VAC for 60 seconds, thereby allowing placement of this filter at the optimal location, immediately behind the connector. This placement allows immunity protection from signal line interference as well as significant reduction of RFI emissions. The filter can be used in conjunction with unfiltered RJ jacks, ganged jacks, or with filtered modular jacks for additional protection.

### Typ. Insertion Loss

asym. —



### Case Styles and typical Sizes



### PC Board Layout

