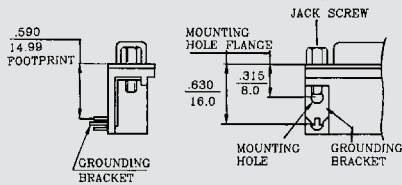


# MOUNTING OPTIONS

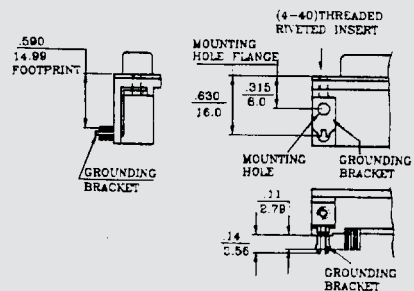
## OPTION X

WITH GROUNDING BRACKETS (LOCKING TYPE), AND JACK SCREWS ASSEMBLED TO CONNECTOR



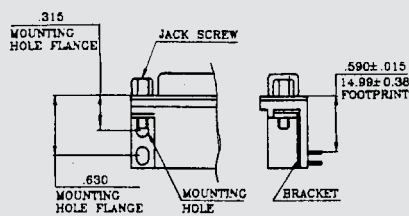
## OPTION P

WITH GROUNDING BRACKETS (LOCKING TYPE) AND WITH THREADED RIVETED INSERTS



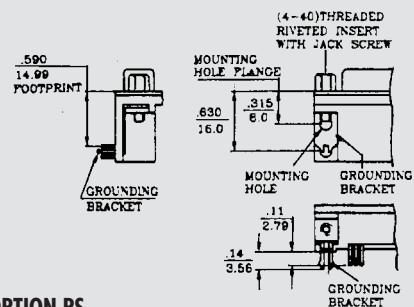
## OPTION L

WITH .315 AND .630 (COMBINATION) MOUNTING HOLES WITH SLOT AND WITH .130 DIAMETER NON-THREADED MOUNTING HOLES AND WITH JACK SCREWS



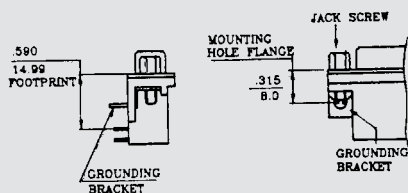
## OPTION PJ

WITH GROUNDING BRACKETS (LOCKING TYPE) WITH RIVETED THREADED INSERTS, AND JACK SCREWS ASSEMBLED TO CONNECTOR



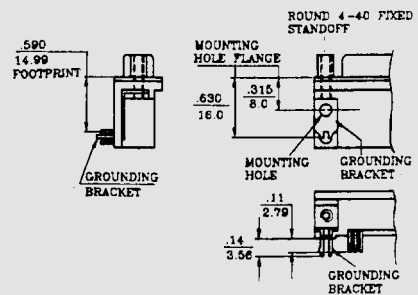
## OPTION Y

SHORT MOUNTING FLANGE WITH .315 MOUNTING FLANGE HOLE DIMENTION, WITH GROUNDING BRACKETS (LOCKING TYPE), AND JACK SCREWS ASSEMBLED TO CONNECTOR



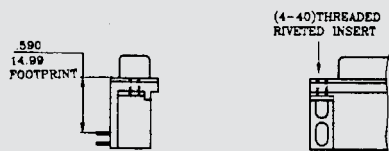
## OPTION PS

WITH GROUNDING BRACKETS (LOCKING TYPE) AND WITH ROUND 4-40 FIXED STANDOFF



## OPTION G

WITH RIVETED THREADED INSERTS



## OPTION PT

WITH GROUNDING BRACKETS (LOCKING TYPE) AND WITH .125 DIAMETER NON-THREADED RIVETED INSERTS

