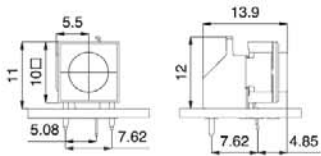


Technical Data

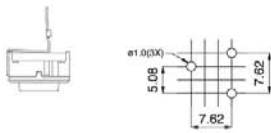
- through-hole only
- 50mA/24VDC
- single pole/momentary
- 10.000.000 operations life time
- IP67 sealing
- temperature range:
low temp: -40/+115°C



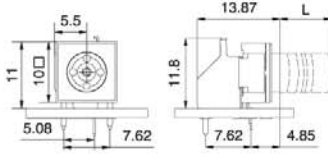
Dimensions 3CTRAS



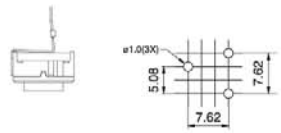
PCB layout



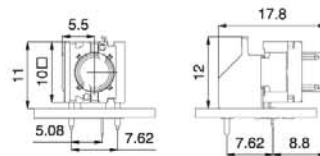
Dimensions 3ETRAS



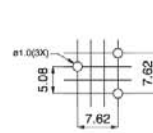
PCB layout



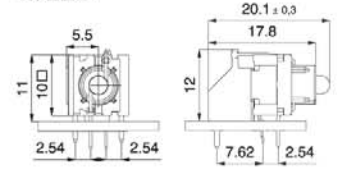
Dimensions 3FTRAS



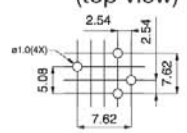
PCB layout



Dimensions 3FTRAS w/LED



PCB layout (top view)



How to order

3 **T** **L 6** **R A S**
Switch **Mounting** **L 6 low temp.** **Right angle support**
3C **T through-hole**
3F

3FTL6RAS - for caps 1D-1K-1P-1S see page 31

3 E **T** **L** **9** **20** **23** **24** **28** **29** **-** **. R A S**
Switch **Mounting** **L low temp.** **Actuator made of PPS** **Actuator height**
T through-hole **9 black** **20 blue** **23 grey** **24 yellow** **28 red** **29 black** **1.6**
 Switch and 3E actuator can be delivered unassembled. **Two digit colour code means actuators made of polycarbonate** **3.1**
4.0
4.6
5.6
8.6

3 F **T** **L 6** **00** **20** **40** **60** **80** **2040** **8020** **8040** **R A S**
Switch **Mounting** **L 6 low temp.** **LED** **Right angle support**
T through-hole **00 blue** **20 green** **40 yellow** **60 white** **80 red** **2040 green/yellow** **8020 red/green** **8040 red/yellow**
 3FTL6RAS w/LED can be used with the keycaps:
 1D,1E,1F,1K,1N,1Q,1R,1S, 1T, 1U, 1V, 1WA, 1WD, 1WP, 1X
 Ask for drawings/dimensions for these keycaps with 3FTL6RAS w/LED

Ordering example: 3FTL620RAS + 1Q096